

Child Care Connections

SHAPE NC



Jesse Turner

On Thursday November 17th, Excel Christian Academy (ECA) and Ebenezer United Church of Christ hosted Jesse Turner and Michele Rivest from the Natural Learning Initiative (NLI) at NC State University. The event was attended by 25 adults and many children who represented a range of different agencies including: Burlington Pediatrics, Burlington Parks and Recreation, the Alamance Alliance for Children and Families, Alamance Community College's Early Childhood Education program, local child care providers, Healthy Alamance, Alamance County Health Department, Ebenezer United Church of Christ, Excel Christian Academy parents and staff and the Alamance Partnership for Children!



Michele Rivest

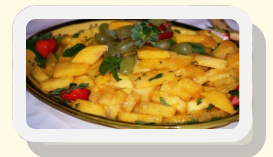
Michele started the presentation by challenging the participants to identify favorite memories from childhood that involved being outdoors then think about why children do not spend as much time outside anymore. Participants then learned about the benefits of outdoor play for children including improvements in their physical, cognitive and social emotional development (for example, coordination, creativity, and attention span).

The presentation also included information about how facilities can transform playgrounds to combine typical play equipment with a naturalized environment that includes additional greenery, water, and landscape features such as hills and pathways. As the Model Early Learning Center for the Shape NC grant in Alamance County, Excel Christian Academy will be involved in a participatory design process with NLI who will include information gathered from parents, children, and staff from the facility as they re-design the outdoor space.



During the presentation, models and representations of "a perfect playground" created by the children and staff from Excel were on display for participants to view.

The event was catered by Sonny's Catering, who provided wonderfully healthy snacks that were enjoyed by all. The marinated pineapple was especially popular with the children!



This community presentation is the first event sponsored by the Shape NC grant that was awarded to the Alamance Partnership for Children earlier this year. In addition to the development of the Model Early Learning Center at Excel Christian Academy the Partnership is facilitating community wide planning that will focus on helping children make healthy food choices, move more, and in the process reduce early childhood obesity in our community. If you are interested in learning more about the Shape NC grant or becoming involved in the community planning process, please contact Debbi Kennerson-Webb at the Partnership office.

Dolly Parton's Imagination Library Registration Form

Dolly Parton's IMAGINATION LIBRARY Official Registration Form

Privacy Statement: This information will not be used for any purpose other than the Imagination Library.

PLEASE PRINT

1st Preschool Child's FULL Name _____

Child's Date of Birth ____/____/____ Sex: M F Phone _____

2nd Preschool Child's FULL Name _____

Child's Date of Birth ____/____/____ Sex: M F Phone _____

Parent/Guardian's Name _____

Child's Home Address _____

ADDRESS

CITY

STATE

ZIP CODE

Mailing Address (if different) _____

ADDRESS

CITY

STATE

ZIP CODE

Email Address _____

"This child is a resident of a *designated school district**" _____

SIGNATURE OF PARENT/GUARDIAN

FOR OFFICE USE ONLY: Date Received: _____ Group Code: _____

Sign up your child today!

Simply fill out the above form and mail to:

Alamance Partnership
for Children
Attn: Literacy Specialist
2322 River Road
Burlington, NC 27217
(336) 513-0063



The Dollywood Foundation is a 501(c)(3) public nonprofit organization.
© The Dollywood Foundation 2008

Dolly Parton's Imagination Library

In 1996, Dolly Parton launched a reading program to benefit the children of her home county in east Tennessee. Dolly wanted to foster a love of reading among her county's preschool children and their families. She wanted children to be excited about books and to feel the magic that books can create. In Alamance County, eligible children receive a free book in the mail per month until they reach their fifth birthday. The books, distributed by the Dolly Parton Foundation, are carefully selected to be age-appropriate and to deliver positive, developmentally important skill opportunities for children. Alamance Partnership for Children is currently providing this service to the Eastlawn, Newlin, Andrews, Haw River, Grove Park, Pleasant Grove, and North Graham school zones. To be eligible, a child between the ages of birth to five years of age needs to reside within one of these districts.

Please mail in the completed enrollment form above, if you are interested in enrolling your child.

For more information call Ann Meletzke 336.513.0063 x 114

HOLIDAY SCHEDULE

During the holidays, the Partnership will be closed beginning Friday, December 23rd and will reopen on Wednesday, December 28th and closed again on Friday, December 30th.



BARNES & NOBLE'S HOLIDAY BOOK DRIVE



Through the generous support of Alamance County residents along with Barnes and Nobles, the Partnership is privileged to distribute over 1,700 books to families within the county during the holidays. On their behalf, the Partnership staff would like to thank everyone who took part in supporting our literacy initiative.



From The Desk Of...

Carrie Theall
Interim Executive Director

As the holidays approach, we are all beginning to feel the rush of the season. Lots of shopping to accomplish, crowds to battle, cookies to bake, trees to decorate, presents to wrap, and within all that—we would like to have time to enjoy everything the season brings. Even though it can be a stressful time, let's remember to set some time aside—especially for the children in our lives.

I was lucky enough to attend the Family Support Network's Santa's Workshop event

at the Holly Hill Mall on the 3rd of December. It was such a great time for our families with children with specials needs. Nothing is better than watching the wonderment in a child's face when he gets some one on one time with Santa. It helped remind me of what this season is all about—the magic and joy children experience over all the season brings.



NC PRE-K

Pre-K applications for the 2012-2013 school year will be available in January. NC Pre-K, ABSS, and Head Start will all accept the same application. Parents only need to fill out one application to be considered for all of the pre-k programs. You may pick up a pre-k application by contacting the Alamance Partnership for Children, ABSS, or Head Start. Also look for the application on our website!

www.alamancechildren.org

Keeping Your Family Healthy



THE COMMON COLD

The common cold is perhaps the most common illness in humans. According to the U.S. Centers for Disease Control (CDC), it is one of the most common causes for work and school absenteeism and doctor visits.

Over 200 viruses can cause a cold with the rhinovirus being the most common. Viruses that cause colds are spread from person to person through small droplets of mucus that become airborne and inhaled by others. Another way colds can be spread is by touching surfaces contaminated by contact with infected individuals and then touching your eyes, nose or mouth.

While it is impossible to completely prevent the spread of colds, there are steps you can take to reduce you and your family's chances of becoming infected.

- Wash your hands often
- Avoid touching your face
- Avoid areas where others are smoking
- Use disposable items if someone in the home is infected
- Frequently disinfect household surfaces
- Wash toys
- Use paper towels in the kitchen and bathroom
- Throw tissues away after use
- Control stress as this can weaken your immune system
- Maintain a healthy lifestyle

See your healthcare provider if you or your child has:

- A temperature higher than 100.4°
- Symptoms lasting more than 10 days
- Symptoms that are not relieved through the help of over the counter medications

If your child is younger than three months and has a fever, it is important to always call your health care provider right away.

The website below is filled with puzzles, activities, and games you and your child can enjoy together while learning about staying healthy.

<http://www.oopkids.com/index.html>

A Healthy Activity for the Kitchen



Cupples

A Healthy Drink for the holidays and for those cold days of winter.

FOR THE CUPPLE

- apple
- melon baller or spoon
- lemon juice

FOR THE DRINK

- cranberry juice
- apple cider
- seltzer water
- cinnamon stick

1. Slice off the top of an apple. Hollow it with a melon baller or spoon, leaving 1/4-inch-thick walls all around. To prevent browning, brush the cup's edge with lemon juice.
2. Combine 1 part cranberry juice, 1 part apple cider, and 1 part seltzer water. Garnish each drink with a cinnamon stick.

Calendar of Events/Trainings

January 5th 6:30-8:30 pm...*Introduction to Online Learning: Early Childhood Providers*
ACC Main Campus, Computer Lab 386
To register, contact Rayvelette Farrington at 336.506.4029

January 17th 6:00-7:30 pm...*Communicable Diseases in Child Care*
Alamance County Health Dept. Edu. Rm. A & B
To register, contact Donna Lawson at 336.570.6382

January 23rd 6:30-8:00 pm...*Language & Literacy: Teaching with Finger Plays and Storytelling*
Guilford Child Development, 1200 Arlington St.
GSO Cost: free for NAEYC members, \$5.00 for non-members/Receive Certificate for 1 hour Professional Development
Registration deadline -January 16th - Email name & phone number to jkoliphant@gtcc.edu

February 7th 6:00-7:00 pm...*Caring for a Child with Seizures/Diastat Administration*
Alamance County Health Dept. Edu. Rm. A & B
To register, contact Donna Lawson at 336.570.6382

February 8th 6:30-8:30 pm...*Creative Planning School Age Style (Part 1)*
Alamance Partnership for Children
To register online visit the Southwestern Child Development Commission website www.swedcinc.org

February 15th 6:30-8:30 pm...*Creative Planning School Age Style (Part 2)*
Alamance Partnership for Children
To register online visit the Southwestern Child Development Commission website www.swedcinc.org

February 16th 6:30-8:30pm...*Understanding and Preventing Biting in Child Care*
Alamance Partnership for Children 2322 River Road, Burlington, NC
To register, contact the Partnership at 336.513.0063

February 21st 6:30-8:30 pm...*Please Teach Me What To Do*
Alamance Partnership for Children 2322 River Road, Burlington, NC
To register, contact the Partnership at 336.513.0063

March 13th 6:00-7:30 pm...*Recognizing and Responding to the Ill Child*
Alamance County Health Dept. Edu. Rm. A & B
To register, contact Donna Lawson at 336.570.6382

March 13th 6:30-8:30 pm...*Preventing Power Struggles with Preschoolers*
Location TBA
To register, contact the Alamance Partnership for Children at 336.513.0063

March 20th 6:30-8:30 pm...*Partnering with Families of School Age Children*
Location TBA
To register, contact the Alamance Partnership for Children at 336.513.0063

TBA 6:00-7:00 pm...*Fire Extinguisher Training*
Burlington Fire Dept., 215 S. Church Street, Burlington, NC 27215
To register, contact the Partnership at 336.513.0063

TBA 6:00-7:00 pm...*Fire Safety*
Burlington Fire Dept., 215 S. Church Street, Burlington, NC 27215
To register, contact the Partnership at 336.513.0063

INCREDIBLE YEARS PARENT CLASSES

(1-3 yr.) March 12th 5:30 pm

(3-5 yr.) March 13th 5:30 pm

Contact Kim Morabito for more information.

kmorabito@alamancechildren.org or call

513-0063, ext. 118

INCREDIBLE YEARS FOR TEACHERS

February 1st-May 16th

12:30-4:30 every other Wednesday

To register, please contact Debbi Kennerson-Webb at 336-513-0063

**Funding available to assist in reimbursing cost for substitutes for those teaching Preschool age in Alamance County.

FAMILY SUPPORT NETWORK

The Incredible Years Support Group is held at Lifespan on the first Tuesday of every month at 6:00 p.m. Please contact Melisa Madden @ 336.513.0063 or email her at melisa@fsncc.org for more information.

On a personal note...

Melisa extends her sincere thanks to families who attended Santa's Workshop on Saturday December 3rd. Your presence ensured a successful event!

Alamance Partnership for Children Staff

Ann Hess-ahess@alamancechildren.org

Ann Meletzke-ameletzke@alamancechildren.org

Ashley Moore-amoore@alamancechildren.org

Bonita Brown-bbrown@alamancechildren.org

Carrie Theall-ctheall@alamancechildren.org

Dana Walker-dwalker@alamancechildren.org

Debbi Kennerson-Webb-debbi@alamancechildren.org

Jasmine Walker-jwalker@alamancechildren.org

Jessica Johnson-jjohnson@alamancechildren.org

Kim Morabito-kmorabito@alamancechildren.org

Lisa Rettie-lrettie@alamancechildren.org

Nan Gilliam-ngilliam@alamancechildren.org

Nelgi Moreno-nmoreno@alamancechildren.org

Tamatha Macherosky-tmacherosky@alamancechildren.org

Alamance Partnership for Children Board of Directors

Board Meetings are held the second Wednesday of the month in the Cotton Conference Room at Glencoe at 12:00 p.m. Call to make reservations.

Executive Committee

Patty Philipps, Chair

Stephanie Williams, Vice Chair

Bryan Hagood, Immediate Past Chair

Ron Waters, Treasurer

Beth Davis, Secretary

Barry Bass

David Carter

Mark Cryan

Joyce Dickey

Patti Horan

Jeremy Ireland

Kristie Kylander

Linda Massey

Jeannie Proctor

Tony Roper

Granville Simmons

Julie Walker

Ron Waters

Davina Woods



2322 River Road • Burlington, NC 27217 • 336.513.0063 • 336.266.1152 (fax)

www.alamancechildren.org

